

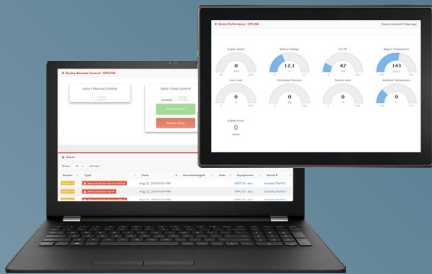
ConnectPoint Mobile



The ConnectPoint Mobile has been designed for demanding engine-mounted and automotive applications. The GNSS, cellular connectivity and CAN channel allows the EdgePoint Mobile to support traditional fleet tracking and telematics applications.

The RS-232, RS-485, Dallas 1-Wire and five digital I/Os connect to most sensors, peripheral devices and control networks. Options for Zigbee, Thread, Bluetooth and proprietary 900MHz radios allow the EdgePoint Mobile to act as a gateway to connect low power wireless networks to the cloud. The IP68 enclosure and voltage protection make it rugged enough to survive demanding environments.

The full range of connectivity make the ConnectPoint Mobile a true workhorse for vehicle and industrial applications.

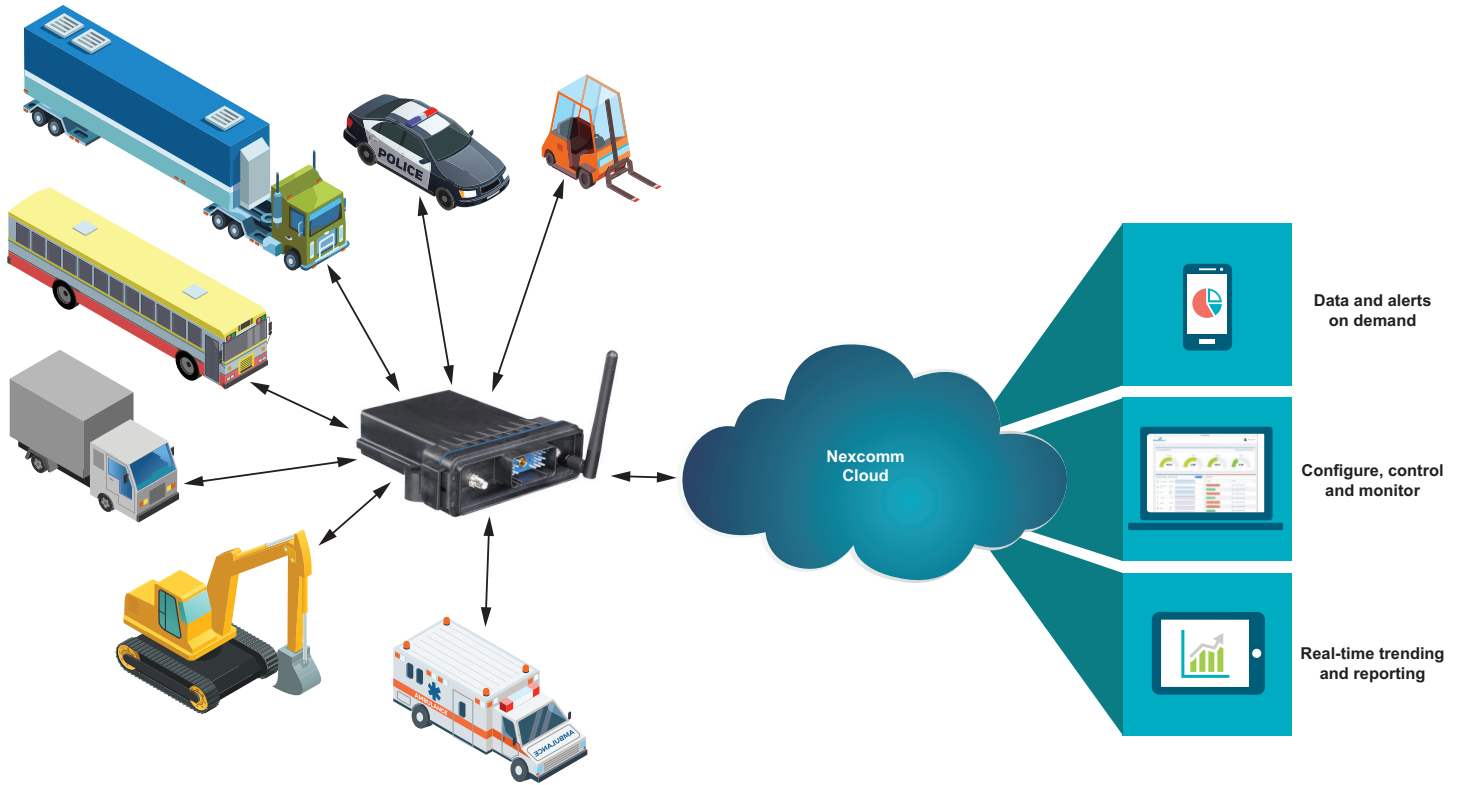


Benefits

- GNSS location services and CAN channel to support traditional telematics features.
- RS-485 and RS-232 ports for communications with ECUs or other equipment.
- Dallas 1-Wire, RS-485 and RS-232 ports for digital sensors.
- CAT-M1 LTE cellular connection offers better range and power management than traditional CAT-1 or CAT-4 links.
- Optional Bluetooth Low Energy, proprietary 900MHz, ZigBee or Thread wireless connections.
- Reverse polarity and load dump protected.
- Rugged IP69 enclosure with flange mounts for easy addition to devices.
- Nexcomm Cloud services are available, or the system can forward data to a customer's existing cloud services.
- Custom labeling and packaging are available.



501 Hobbs Street
Tampa, FL 33619
www.nexcommsys.com
(813) 302-7131



ConnectPoint Mobile Specifications

Electrical

Operating Voltage: 9 to 36VDC, reverse polarity and load dump protected

Communications:

- One CAN bus channel
- One Dallas 1-Wire channel
- One RS-485 Modbus channel
- One RS-232 channel

Radios

- Cellular: LTE, CAT-M1
- GNSS location services
- ZigBee, Thread, Bluetooth, proprietary 900MHz, Active or passive RFID (options)

Inputs / Outputs:

Five 0 to 10V digital inputs with three also 300mA current sink outputs

Environmental:

Operating temperature: -20°C to +70°C (-4°F to +158°F)

Mechanical

4.55 x 5.13 x 1.67 inches (115.57 x 130.30 x 42.42mm) with mounting flange
IP69

Other:

3-axis accelerometer

CPU

Atmel ATSAMC21G18A Chipset (ARM Cortex-M0+ architecture) at up to 48MHz (8MHz typ)
256kB flash (total), 32kB RAM

